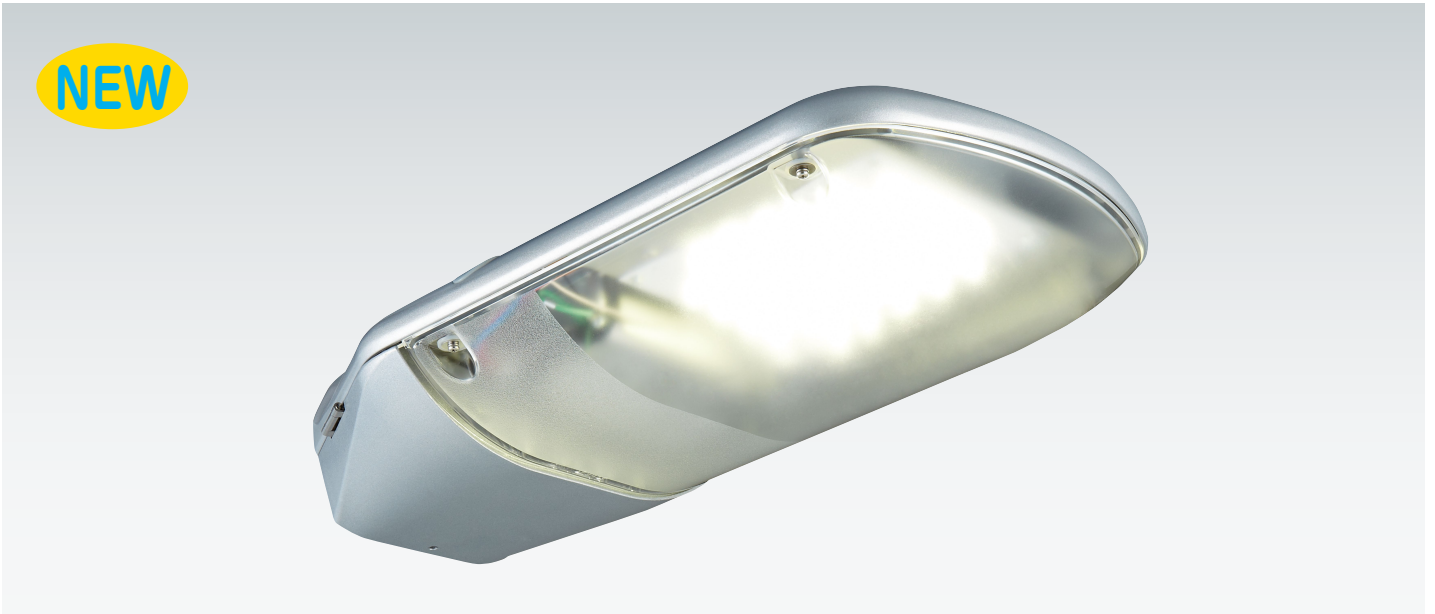


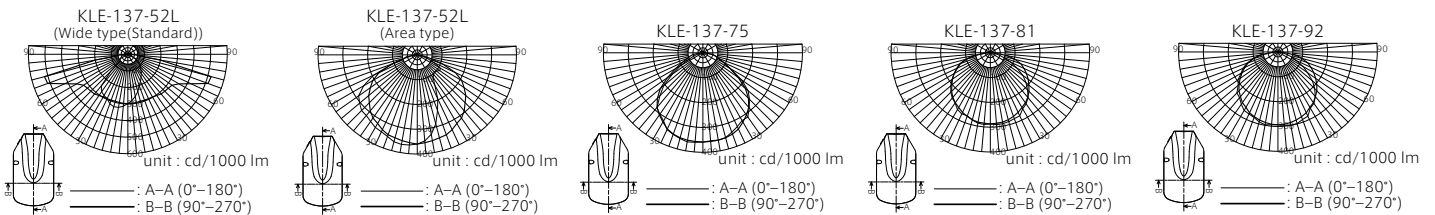
KLE-137-52L / KLE-137-75 / KLE-137-81 / KLE-137-92



KLE-137 series require an arm separately for installation. (Adaptable arm diameter: $\phi 34.0$, $\phi 48.6$ or $\phi 60.5$ mm)

Light Distribution

Polar Curve



Features

Optical Versatility (※KLE-137-52L only)

Light distribution patterns are variable.

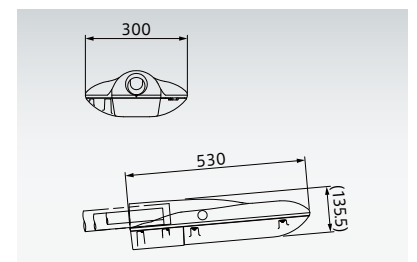
KLE-137-52L provides two different light distribution patterns, allowing the choice between wide and area type in accordance with installing sites.

Arm Mounting Hole

Adjustable for three different size of mounting arms, $\phi 34.0$, $\phi 48.6$ or $\phi 60.5$ mm.

Having structure to maintain the center of line of mounting arm, the outer appearance is enhanced when the luminaire is installed.

Dimensions



Basic Performance

Model Name	Lamp	Housing	Cover	Standard Color	Weight (kg)	Voltage (V)	Input Current (A)	Power Consumption (W)	Luminous Flux (lm)	Luminous Efficiency (lm/W)	Lamp Life (hr) ※1	Color Temperature (K)
KLE-137-52L	LED 2W type ×24	ADC	Acrylic Resin	Metallic Silver	5.8	220 AC	0.243	52	5,720	110	60,000	5,000
						240 AC	0.235					
KLE-137-75	LED 2W type ×32	ADC	Acrylic Resin	Metallic Silver	6.0	220 AC	0.355	75	8,300	110.6	60,000	5,000
						240 AC	0.326					
KLE-137-81	LED 2W type ×38	ADC	Acrylic Resin	Metallic Silver	6.0	220 AC	0.378	81	9,100	112.3	50,000	5,000
						240 AC	0.350					
KLE-137-92	LED 2W type ×42	ADC	Acrylic Resin	Metallic Silver	6.1	220 AC	0.430	92	9,800	106.5	50,000	5,000
						240 AC	0.392					

*Light control is not equipped. ※1: Lumen maintenance factor 70%